

**For Lease**

# Residential Assisted Living Facility

649 N. Stratford Lane Wichita, KS

## Lease Information:

Building Size

2,554 SF

Lot Size

13,985 SF

2018 Taxes

\$2,732

Lease Length

3+ Years

Lease Type

NNN

Lease Rate

\$2,000/Month



## AMENITIES

- » Fit out for assisted living but has potential for sober living facility as well.
- » 5 Bedrooms and 3 Bathrooms.
- » New floors, paint, and granite!
- » Wheelchair accessible bathroom with large roll in shower, handicap accessible toilets, outdoor patio, large dining and living room, and fire alarm system.

For Information Contact:

**Jake Ramstack**

(316) 618-1100

jake@insitere.com

InSite Real Estate Group  
608 W. Douglas, Suite 106  
Wichita, KS 67203

Like/Follow us!



**InSite**  
REAL • ESTATE • GROUP

**For Lease**

# Residential Assisted Living Facility

649 N. Stratford Lane Wichita, KS

## Lease Information:

Building Size

2,554 SF

Lot Size

13,985 SF

2018 Taxes

\$2,732

Lease Length

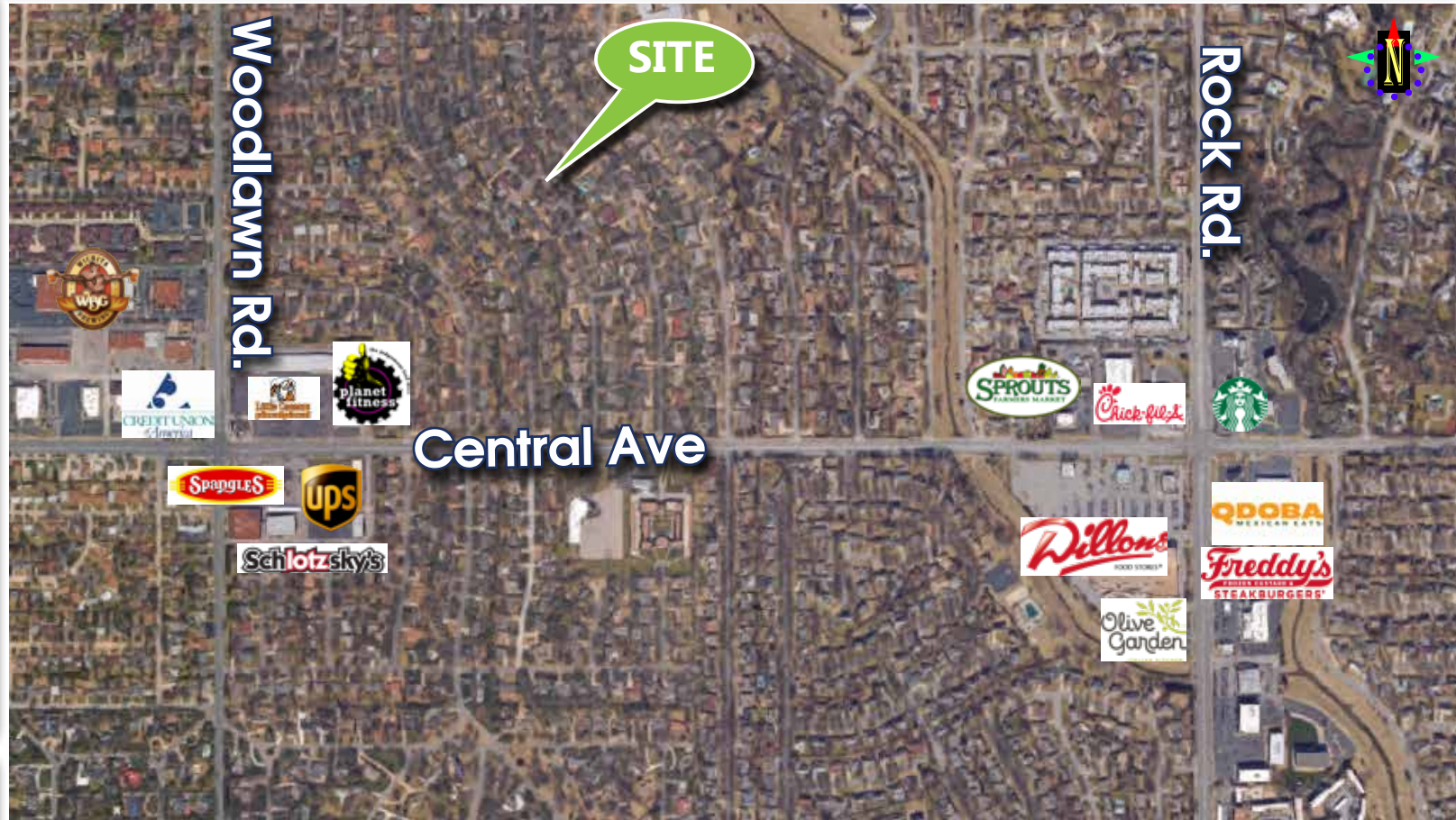
3+ Years

Lease Type

NNN

Lease Rate

\$2,000/Month



## For Information Contact:

**Jake Ramstack**

(316) 618-1100

[jake@insitere.com](mailto:jake@insitere.com)

InSite Real Estate Group  
608 W. Douglas, Suite 106  
Wichita, KS 67203



Like/Follow us!



**InSite**  
REAL • ESTATE • GROUP